



# CHALET DES NEIGES

Perfect for families / Hot tub / Eco-friendly

## We are proud to introduce Meriski's first eco-friendly chalet!

The owners of Chalet des Neiges have lovingly rebuilt their former home, combining a traditional alpine chalet with a contemporary feel. The interiors have been superbly designed and finished with a mix of traditional wood, white walls and other locally sourced materials.

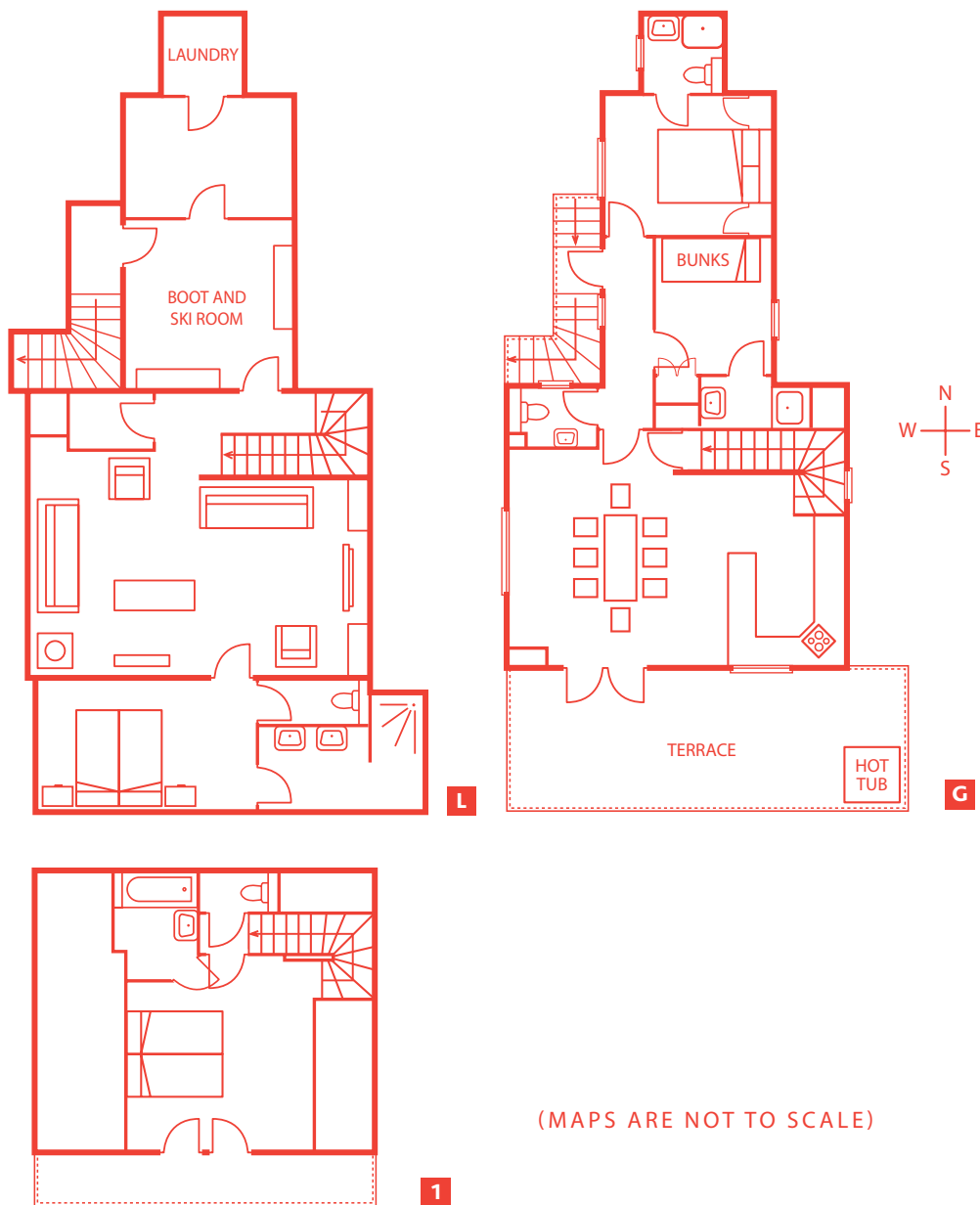
Enter the chalet at ground level and you are immediately struck by the light and airy feel this chalet has. On this floor you will find a superb kitchen / dining room with sliding doors leading out to a south-facing wood terrace and wonderful sunken hot tub to cure those aching limbs. There are two bedrooms on this level and another up on the first floor with views towards Mont Vallon.

On the the lower ground floor is the fourth bedroom with an amazing wetroom. There is also a bootroom with heated boot warmers, a very cosy sitting room with beautiful wood burning stove, perfect for those wintery evenings, and a large flat screen television.

- 6-8 Guests.
- 1 x double with ensuite shower
- 1 x bunk room with ensuite shower
- 1 x large twin/double bedroom with ensuite wet room
- 1 x large twin/double room with ensuite bath
- All bedrooms have flat screen televisions
- Sitting room with large flat screen TV
- Outdoor hot tub

# CHALET DES NEIGES

Chalet des Neiges floor plan — sleeps 6-8



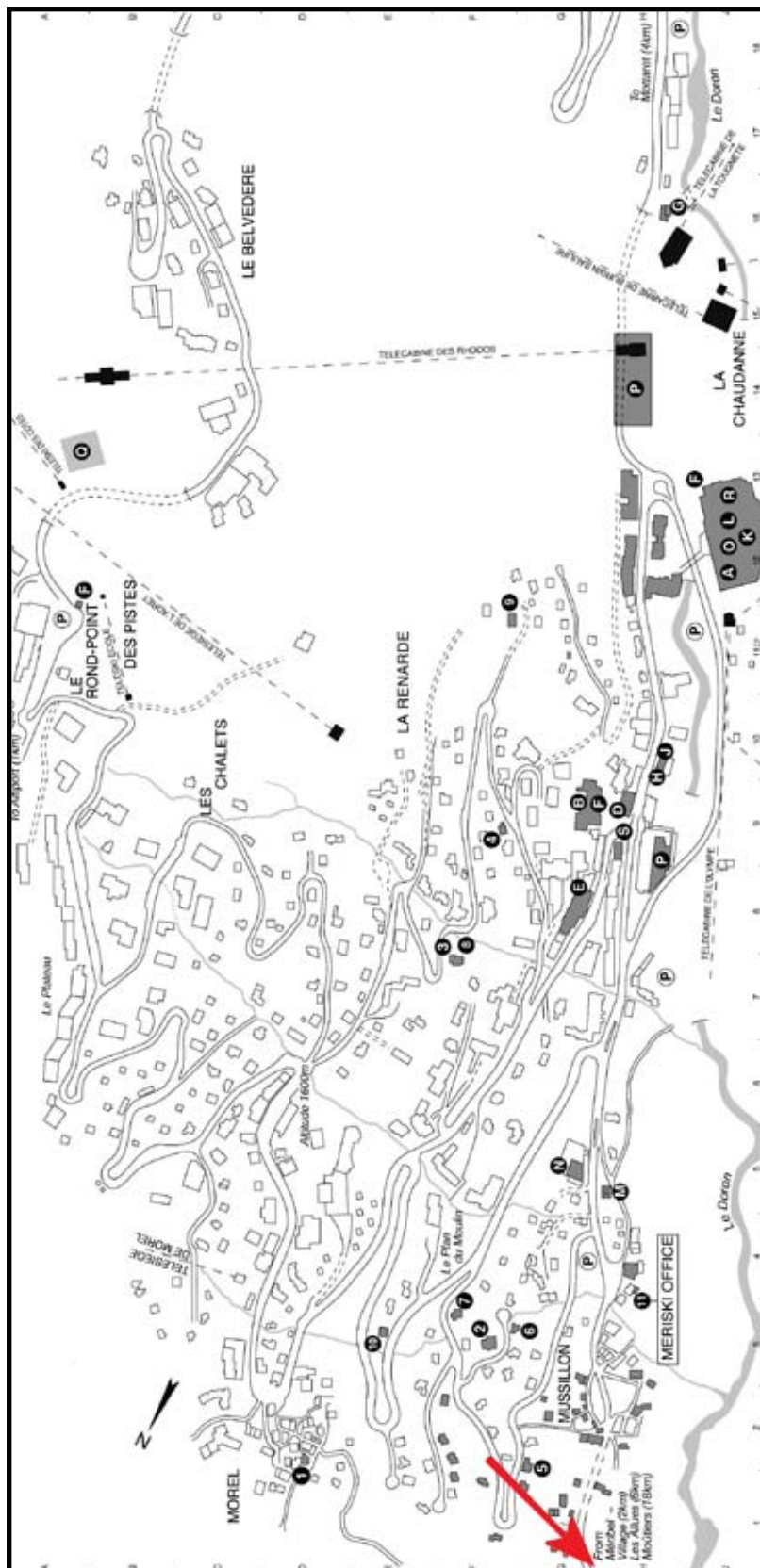
Prices available on request.

In keeping with the eco friendly theme, Meriski is operating this chalet on a Saturday to Saturday so our guests can take advantage of the Eurostar. We think this chalet is an excellent addition to our portfolio and is perfect for a large family or two families wishing to enjoy a weeks skiing together in a chalet with the very best facilities.

- |                               |                             |
|-------------------------------|-----------------------------|
| <b>1 2</b> etc Bedrooms       | <b>D</b> Dining             |
| <b>P</b> Playroom             | <b>B</b> Balcony            |
| <b>M</b> Mezzanine            | <b>E</b> Entrance           |
| <b>G</b> Ground Floor         | <b>K</b> Kitchen            |
| <b>S</b> Living               | <b>T</b> Terrace            |
| <b>C</b> Chalet Staff         | <b>L</b> Lower Ground Floor |
| <b>1 2</b> 1st floor, 2nd etc | <b>H</b> Entrance Hall      |

# MÉRIBEL RESORT INFORMATION

## Resort plan



- |    |   |     |
|----|---|-----|
| 1  | Sabaudia  | 7F  |
| 2  | Iberis  | 3F  |
| 3  | Lindon  | 7F  |
| 4  | L'Ardour  | 9F  |
| 5  | L'ormente   | 2G  |
| 6  | Nant de Morel                                       | 3F  |
| 7  | Bellevue  | 3F  |
| 8  | Le Ruisseau   | 7F  |
| 9  | Bambis  | 11F |
| 10 | Virage  | C7  |
| 11 | Meriski Crèche                                      | 4H  |
| 11 | Meriski Office                                      | 4H  |
| A  | Dr Schamasch, Medical Centre & Dentist              |     |
| B  | Tourist Office                                      |     |
| D  | Sport Boutique                                      |     |
| E  | Cinema  |     |
| F  | ESF Office, (Office & Meeting Point) 9G (12A & 13J) |     |
| G  | Magic Snow Sports Academy (Meeting Point)           |     |
| J  | Crédit Agricole Bank                                |     |
| K  | Gendarmerie & Police Nationale                      |     |
| L  | Swimming Pool                                       |     |
| M  | Church  |     |
| N  | Supermarket   |     |
| O  | Olympic Stadium                                     |     |
| P  | Parking - Covered                                   |     |
| P  | Parking - Outside                                   |     |
| S  | Village Centre                                      |     |